

FBV HM 2025



Oil Pattern Distance: **41 Feet**
 Forward Oil Total: **15.65 mL**
 Forward Boards Crossed: **313 Boards**

Reverse Brush Drop: **36 Feet**
 Reverse Oil Total: **11.25 mL**
 Reverse Boards Crossed: **225 Boards**

Oil Per Board: **50 uL**
 Volume Oil Total: **26.9 mL**
 Total Boards Crossed: **538 Boards**

Start	Stop	Loads	Speed	Crossed	Start	End	Feet	T.Oil
1	2L 2R	2	18	74	0.0	2.5	2.5	3700
2	7L 7R	2	18	54	2.5	7.6	5.1	2700
3	8L 8R	2	18	50	7.6	12.7	5.1	2500
4	10L 10R	3	18	63	12.7	20.3	7.6	3150
5	11L 11R	2	18	38	20.3	25.4	5.1	1900
6	12L 12R	2	22	34	25.4	31.6	6.2	1700
7	2L 2R	0	22	0	31.6	36.0	4.4	0
8	2L 2R	0	30	0	36.0	41.0	5.0	0

Conditioner:
Type In or Select One

TransferType:
Type In or Select One

Forward
Reverse
More

Start	Stop	Loads	Speed	Crossed	Start	End	Feet	T.Oil
1	2L 2R	0	30	0	41.0	35.0	-6.0	0
2	13L 13R	2	22	30	35.0	28.8	-6.2	1500
3	11L 11R	3	18	57	28.8	21.2	-7.6	2850
4	10L 10R	4	18	84	21.2	11.0	-10.2	4200
5	7L 7R	2	14	54	11.0	7.1	-3.9	2700
6	4L 4R	0	14	0	7.1	0.0	-7.1	0

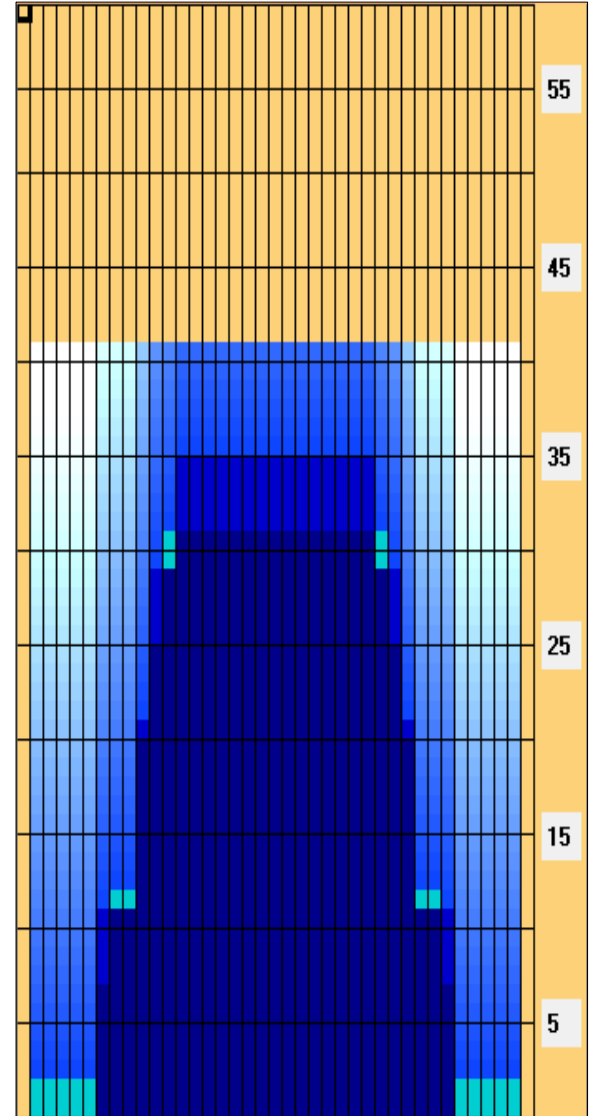
Forward
Reverse
More

Forward

Reverse

Combined

Buff



Item	3L-7L:18L-18R	8L-12L:18L-18R	13L-17L:18L-18R	18L-18R:17R-13R	18L-18R:12R-8R	18L-18R:7R-3R
Description	Outside Track:Middle	Middle Track:Middle	Inside Track:Middle	Middle: Inside Track	Middle:Middle Track	Middle:Outside Track
Track Zone Ratio	8.57	1.64	1	1	1.64	8.57

